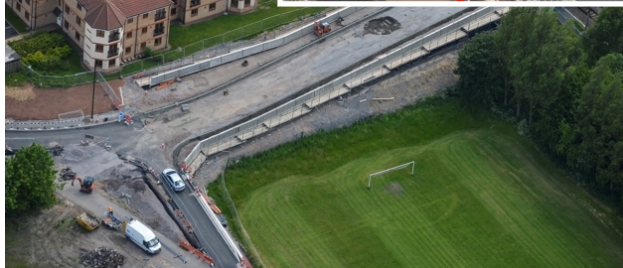
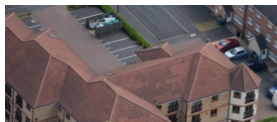




Darlaston Strategic Development Area (SDA) Access Scheme, Walsall

PDL231



Dawnus was awarded this road highway scheme, which aims at improving infrastructure and transport links around Walsall. The Darlaston SDA Access Project is a significant urban regeneration project taking currently unproductive land and developing it into a major centre for economic growth and employment. In order for this to be successful, new and improved transport and infrastructure must be provided.

The scheme involved road and bridge widening, new highway alignment, junction improvements, a new roundabout, and lowering an existing carriageway underneath a listed aqueduct.

The project won a **2015 British Safety Council International Safety Award**, and was awarded the **2016 CIHT West Midlands Award for Best Large Highway and Transportation Project**.

Client: Walsall Metropolitan Borough Council

Value: £12,600,000

Engineer: Mott MacDonald

Duration: 87 weeks